

# Trinity Lutheran Church

Ashland, Ohio Fall 2001



Overview of Kitchen

Cres Cor Cook and Hold,  
Imperial Convection Oven, and  
Gas Electric Ignition Oven by Garland  
under the hood

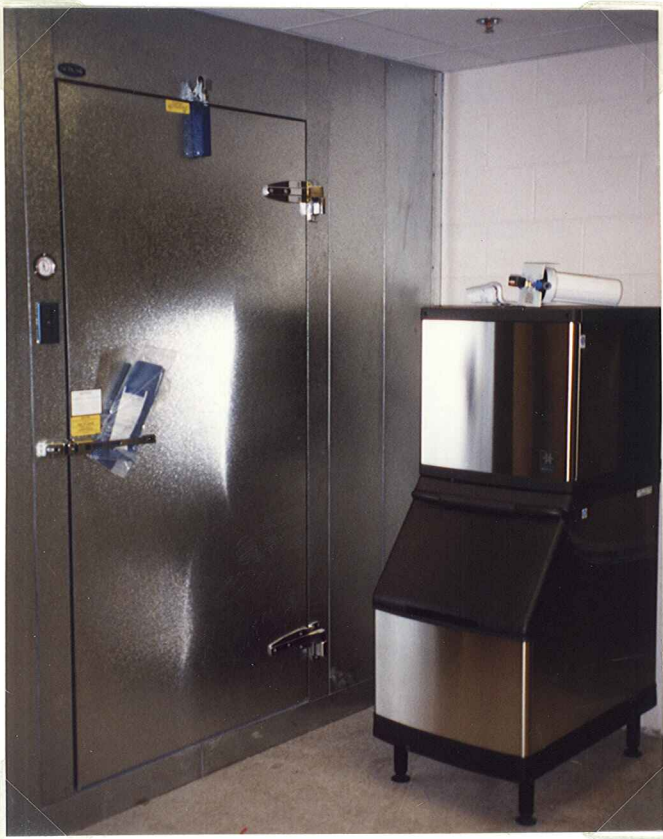


60" Gas Electronic Ignition Range  
by Garland

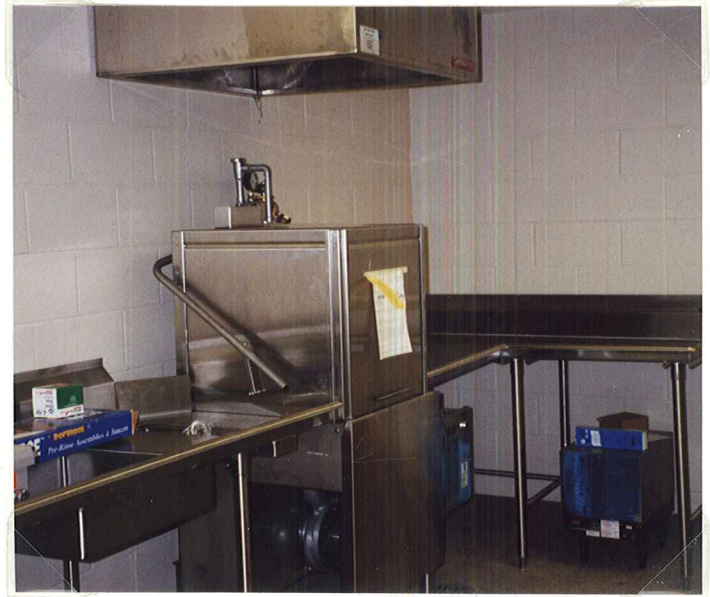
Imperial Convection Oven



## Trinity Lutheran Church, Cont.



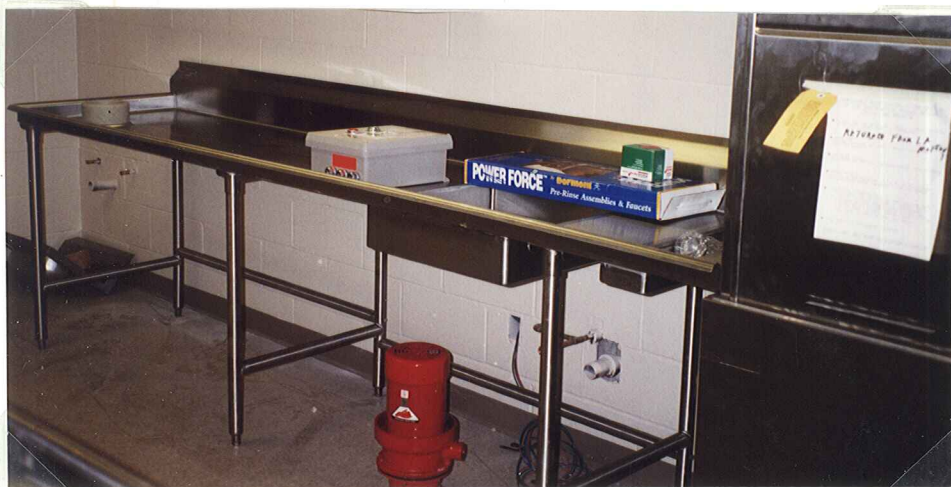
Norlake Walk-in and  
Manitowoc Ice Machine



Hobart AM-14 Dish machine  
With Booster Heater



3 compartment Pot & Pan sink  
awaiting final plumbing and faucets



Scrap Table going into  
AM-14 Dishmachine  
Awaiting final mounting of  
Red Goat Disposer



## Trinity Lutheran Church, Cont.



Stainless Steel Work areas  
photographed from different angles